

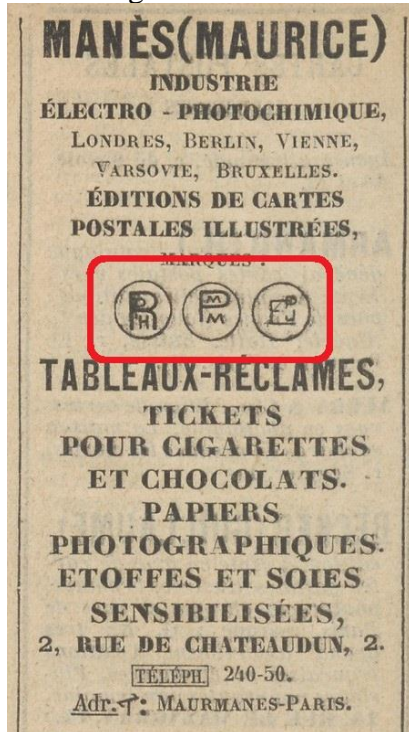
RPH-EPJ-MMP Project

By Harold Hoff, March 2023 (Revised July 2023)

The purpose of this project is to illustrate a relationship between RPH and two publishers; EPJ and MMP. Further, it is posited that yet-to-be-discovered RPH series may exist as postcards published under EPJ or MMP logos.

For background on this relationship, David Schofield presented evidence of this at his website here: https://rthcards.co.uk/pologos/data/PMM/PMM_01.html

The strongest evidence of this relationship is this image, which shows all three logos side by side:



Mark Goffee is the owner and editor of the *Ross Verlag Movie Star Postcard* website. With the help of many world-wide contributors, he has hosted a remarkable database of RPH cards. A large percent of RPH-Series postcards has been found, particularly in the middle of the run. In many cases, the complete set of postcards for a particular series is now showcased.

For series RPH-52 through RPH-57, the card numbers were not consecutive. While it is believed that all cards for these series have been found, the random nature of numbering means this can never be conclusive. However, as the numbering reverted to consecutive card numbers, it became possible to determine how many cards belong to a series, and what the missing card numbers might be, due to the series and card numbers bracketing the one in question.

Focusing on early RPH cards series contained in the 52 – 1000 set (era of 1902 into 1907), there are some series for which no example has as yet been uncovered. It is the author's assertion that certain series with non-RPH logos may also be the missing RPH series. As evidence, we will examine linkages between RPH and these other publishers.

1. RPH & MMP

1.1 MMP Logo on Back

MMP is Maurice Manès, Paris (source: https://rthcards.co.uk/pclogos/data/PMM/PMM_01.html)



Above is an example of an early RPH card (RPH 62-7653) clearly exhibiting the Rotophot logo. The reverse bears the MMP logo bottom left.

Examples of this have been found on cards from the following series: 54 to 56, 62, 70, 73, 74, 76 to 82, 85, 111 and 113. It is reasonable to assume that similarly logoed cards of other earlier series must also exist.

No example has been found on cards bearing the German “Postkarte” etc on the reverse. It has only been observed on postcards bearing the French “Carte Postale”. However, many examples bearing a French reverse do not have the MMP logo either.

One can surmise that these Rotophot cards were printed for the French market under the auspices of MMP, although this does not answer the question of why some French cards have the MMP while others do not.

1.2 MMP Logo on Front

RPH 73 – Blandine Ebinger (Charity, Faith and Hope)

This RPH series (Charity, Faith & Hope) is comprised of three cards numbered 2111, 2112 and 2113.

Beginning with at least RPH Series 73, cards began being issued with the MMP logo on the front in place of the RPH logo. Below are the MMP versions to their RPH counterparts with the following differences:

- 1) The Charity, Faith and Hope titles are printed in French,
- 2) There are no series or card numbers, and,
- 3) The backs of the cards may or may not have the MMP logo shown in 1.1

The three cards shown below are all issued with the MMP logo, and without card numbers.



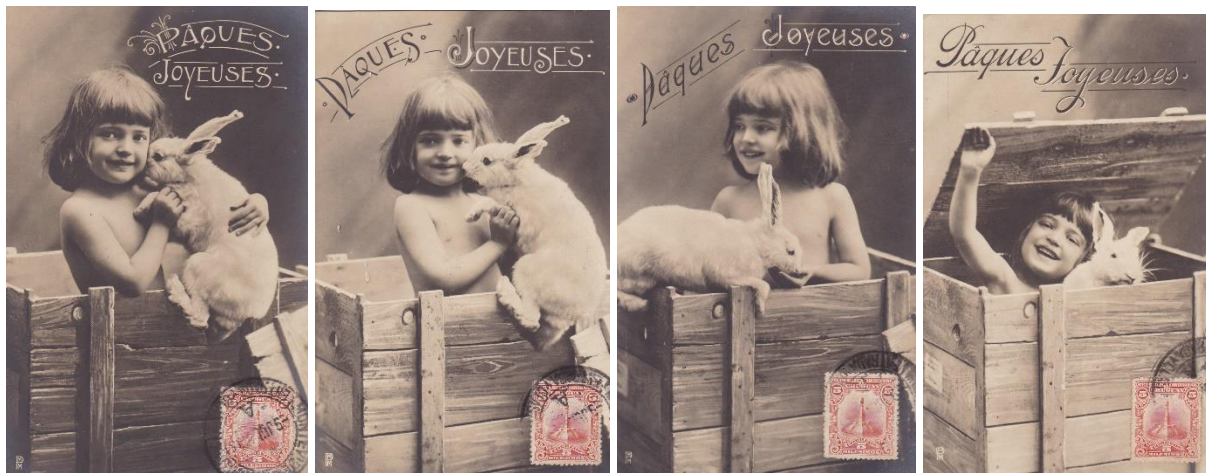
RPH 105 – The Bunny Girl

This should be an 8-card series running 3032 to 3039

Below are 4 examples of RPH 105 cards, RPH logoed and numbers 3032, 3034, 3035 & 3036



Below are 4 unnumbered MMP cards, obviously of the same series and including the 3035 & 3036 cards. This convincingly shows these MMP cards are indeed also RPH series 105.



Again, the MMP cards are captioned in French, and missing series and card numbers.

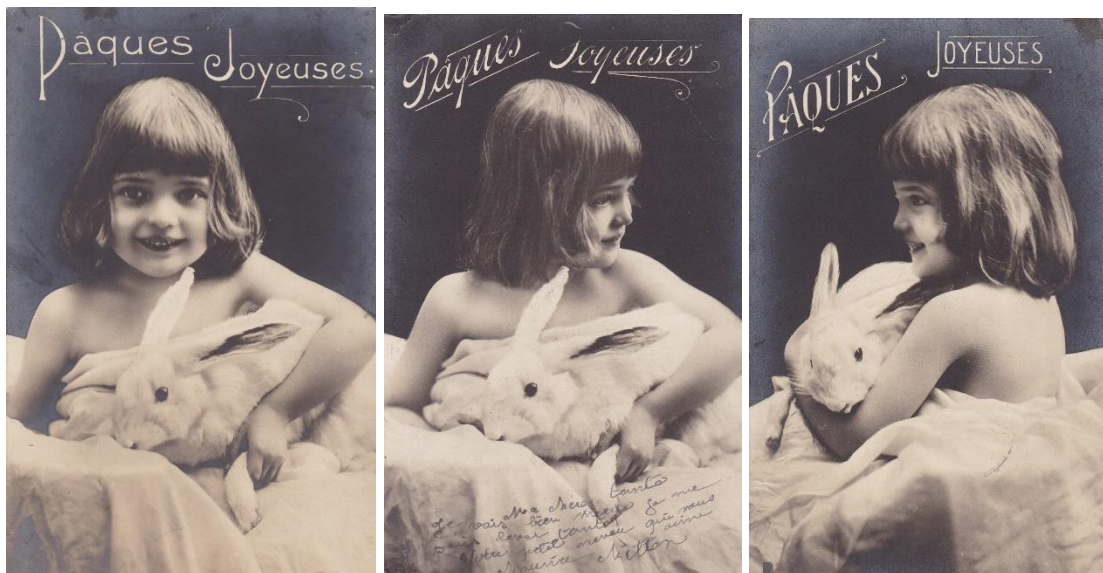
RPH 106 – The Bunny Girl

This should be a 6-card series running 3040 to 3045

Here are 3 examples of RPH 106 cards, RPH logoed and numbers 3040, 3041 & 3045



Here are 3 unnumbered MMP cards, obviously of the same series and including the 3041 card (above) with the other two being 2 of the 3 missing 3042, 3043 or 3044. This convincingly shows these MMP cards are indeed also RPH series 106.



One can conclude from the above examples that MMP, with RPH's permission, reprinted the RPH series under their logo for the French market. This is important because an unnumbered MMP card, being of the correct era and subject matter, may be an example of a yet-undiscovered RPH series card.

2. RPH & EPJ

EPJ, see comments linked here: https://rthcards.co.uk/pclogos/data/PMM/PMM_01.html

The linkage between RPH and EPJ-logoed cards is somewhat more complex than the RPH-MMP. Whereas MMP cards seemed to directly correspond to their RPH counterparts, that is not the case with EPJ.

RPH 132 – Girl posing with a blossom tree



This 6-card RPH series spans cards 3195 to 3200. Examples of at least 3195, 3198 and 3200 have been found in both RPH and EPJ versions. Since the EPJ cards are identically (series and card) numbered with their RPH counterparts, one can conclude that the entire series exists in both versions.

RPH 163 – the Bunny Girl posing with evergreen branches for Christmas

This should be an 8-card series running numbers 3405 to 3412.

Here are 6 examples of RPH 163 cards, 3405, 06, 07, 09, 10 & 12 (not in order)



Here are two other examples not included in the above but obviously from the same photo scene.

The logos are printed so faintly as to be undiscernible. They also have no card number, but based on what's known, these should represent cards 3508 & 3511 to complete the series.



Again, we have another publisher producing the same cards as the corresponding RPH series.

There are other examples, but the above should suffice to prove the relationship.

My observation has been that EPJ cards often display both a series number and also a card number. MMP cards may show a series, but not a card number, or nothing at all.

EPJ & RPH cards with mismatched series numbers

Previously, we viewed an example of EPJ cards that conveniently featured the same series number (EPJ 132) as their RPH counterpart from where they were presumable derived. However, this is often not the case. If this relationship exists, then apparently only for the lower numbered EPJ cards.

Examples exist where RPH cards in the 100s series have been found on EPJ logoed cards with series in the 500s. Below are two cards labelled as EPJ-550 (but no card number) and these correspond to cards from the RPH-125 series.

Below Left: is RPH logoed with “Serie 125” bottom left and “3147” bottom right

Below Right: is EPJ logoed bottom left and “Serie 550” bottom right, no card number



EPJ 583 - Blandine Ebinger posing with a blossom tree

Below are the six cards that make up EPJ series 583, and they are numbered 1 through 6.



It was originally hoped that this series corresponded to the RPH 583 series, for which no card was yet known. However, recently an example of RPH 583 (card #5851, Bunny Girl playing with a bunny for Easter) emerged, so now we know conclusively that EPJ 583 does not correspond to RPH 583.

The question arises whether this EPJ series could be a misnumbered missing RPH series. Here are some points to consider:

The EPJ 583 girl is undeniably Blandine Ebinger who was a featured early RPH model.

Blandine is posing at a blossom tree. This was a common RPH prop as in RPH-109, 125, 131 & 132.

The era is also correct with one of the EPJ cards found bearing a postmark of 1903. If this corresponds to an RPH series, then it must be around series RPH 166 or lower, as that is about the highest series where a postmark as early as 1903 is known.

Finally, we have shown other examples of 500-series EPJ cards which correspond to 100-series RPH cards.

So, if EPJ 583 is indeed a missing RPH (100s) series, where are the gaps that it could fill?

RPH 139 - could be the 6 cards from 3243 through 3248

RPH 143 - has an 11-card gap 3269 through 3279, albeit some of these may be missing cards from adjoining series

RPH 154 – Although this might be a different 6-cards series, MO-60-1 to 6, as discussed next.

RPH 162 - has an 8-card gap from 3397 through 3404

There are cases where a real photo model was proprietary to a certain publisher. In these cases, if they appeared as a one-off under another publisher, it would be easy to deduce the image was appropriated and was in fact created by the original publisher. This is of no help in this case, as Appendix 1 will highlight, Blandine Ebinger's images were distributed by a wide variety of seemingly unrelated publishers.

Conclusions:

We have conclusively established the link between certain known RPH series against their EPJ or MMP counterparts, and that the series numbers do not always match. We cannot prove that certain missing RPH series are missing because they were only released under another publisher logo.

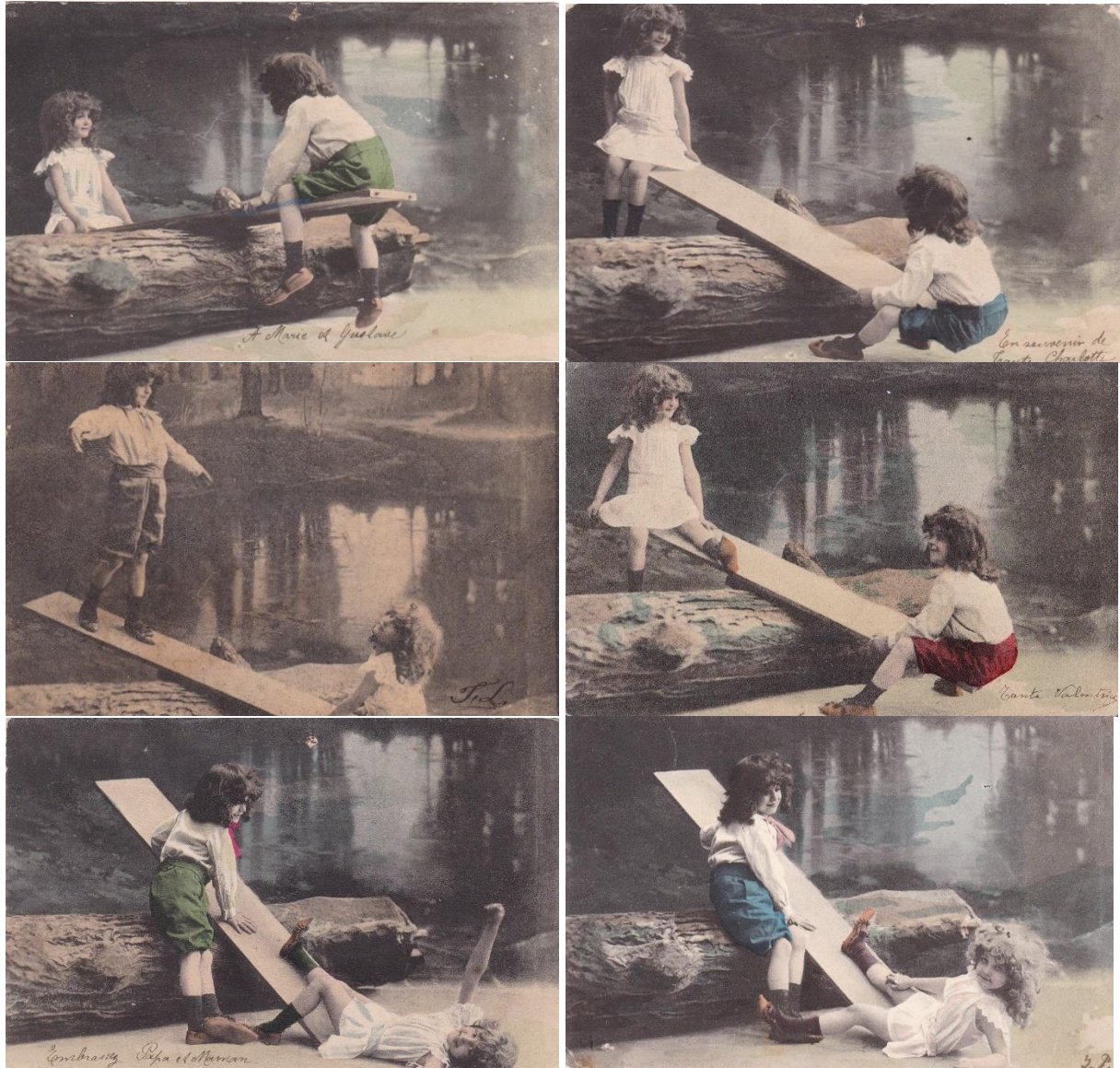
While we know that the EPJ 583 series is not the corresponding RPH 583 series, there is compelling evidence that the EPJ 583 series is one of the missing earlier RPH series, such as RPH 139 or RPH 143. However, we'll never be certain until such an RPH logoed card surfaces.

3. RPH & MS

MS series 60 – Blandine on a seesaw with the boy that frequently appeared with her

Further information about the “MS” logo can be found at David Schofield’s website here:
https://rthcards.co.uk/pclogos/data/MSI/MSI_01.html

A series of 6 cards, found as MS 60.1 to 60.6, is shown below:



This boy frequently appeared with Blandine in RPH series of this era. Based on the fact that the cards have earlier postmarks (1904) and being highly reminiscent of the features in RPH 155, there is a good possibility that this is the missing RPH 154 series. Albeit not conclusive.

Here is yet another example of what appear to be RPH product, but published under another logo. The author thanks you for your interest in reading his thoughts on this subject.

APPENDIX 1: Examples of Blandine Ebinger in Non-RPH postcards



Far Left:
BNK 32643-1, Blandine
(at right) & friends
holding hands, Germany
c1906

BNK is Berlin-Neuroder
Kunstanstalten

Left:
ESD 727, Blandine with
a dachshund, Germany
1903PM

ESD is Edgar Schmidt,
Dresden



Far Left:
OPF, Blandine Ebinger
(right) Merry Christmas,
Germany, dated 1903 but
not postmark

OPF is Osnabrücker
Papierwarenfabrik
(Löwenstein &
Formstecher)

Left:
Unknown publisher -
Blandine Ebinger and
friend, Germany 1906PM
But likely c1903



Unknown Publisher, series 2617
One of four known cards

Blandine Ebinger posing at swimming pond
Germany, undated

Based on Blandine's apparent age, the card could be c1906



CA&Co 1768, Blandine holding doll
Christmas, Germany 1902PM

CA&Co is Carl Andelfinger & Co,
München



Hartmann 3057, Blandine (left) and
friend, Germany 1904PM

Based on Blandine's apparant age, the
card could be c1902

Hartmann Trade Mark logo reverse
Possibly England

Note: Publisher descriptions sourced from rthcards.co.uk